

SCHOOL OF ARCHITECTURE, DESIGN & URBANISM

MARCH 2024 | VOL - 02 | ISSUE - 03

INTERNATIONAL WORKSHOP “EXPLORING THE CONCEPT OF INFORMALITY AND URBAN ENCROACHMENTS IN LAHORE’S TAPESTRY” BY ELENA CUCCHI AND SHAMIM BATOOL FROM CHALMERS UNIVERSITY OF TECHNOLOGY



An international workshop was conducted at the Department of Architecture, School of Architecture, Design and Urbanism, Institute for Art and Culture, for 10th Semester students. Ms. Elena Cucchi and Shamim Batool, who are conducting their Master’s Thesis research on Lahore’s Informal Settlements, discussed the issues pertaining to overcrowded informal spatial planning, socio-political conflict zones, eco-sensitive environments, and sustainable measures that can act as inspirations for Lahore’s contemporary developments. Students were handed down sticky-notes, writing pads, chart-papers in order to express their mental maps regarding Lahore’s informal developments. The session was convened by the Dean, Prof. Dr. Muhammad Yusuf Awan, organized by Ar. Dr. Mansoor Ahmed and was assisted by Asst. Prof. Ar. Dr. Danyal Ahmed, Asst. Prof. Najam-Ul-Haq and Asst. Prof. Hamna Ahmad.

EXPLORING THE SAARC BAZAR, BY INTERIOR DESIGN DEPARTMENT SCHOOL OF ARCHITECTURE DESIGN AND URBANISM, IAC

MEHREEN JUNAID



Students from Interior Design IAC, recently delved into the vibrant tapestry of South Asian heritage at the SAARC Bazaar Exhibition in Pakistan. Organized to promote cultural exchange and showcase traditional crafts, the excursion provided invaluable exposure to a plethora of artisanal treasures. From intricate textiles to ornate woodwork, students immersed themselves in the rich craftsmanship of the region, engaging with artisans and gaining insights into the cultural significance behind each piece. Inspired by Pakistani motifs and designs, they returned with a renewed sense of purpose, poised to infuse traditional elements into contemporary interior design, bridging the gap between tradition and modernity.

The SAARC Bazaar Exhibition emerged as more than just a platform for trade; it became a catalyst for cross-cultural understanding and appreciation. Through interactions with artisans and exposure to diverse crafts, students gained a deep appreciation for the region’s cultural heritage. Such experiential learning opportunities transcend classroom boundaries, nurturing students’ creativity and cultural sensitivity. As they carry forward their newfound inspiration, they contribute to the preservation and promotion of traditional crafts in an increasingly globalized world, ensuring their continuation for generations to come.

STUDY TOUR TO LAHORE FORT ARRANGED BY SCHOOL OF ARCHITECTURE DESIGN AND URBANISM, IAC

The students of Semester 4 along with their Architecture Design Studio Instructors Asst. Prof. Ar. Umar Malik and Lec. Ar. Maria Chughtai visited the Greater Iqbal Park on March 18, 2023. The students were given the project to design a pavilion on the site of Greater Iqbal Park. They were taught how to document and analyze the project site. After careful analysis of the park in general, the students finalized their own site according to the function of their pavilion. The students also interviewed the visitors to understand their needs inside the park. A detailed lecture to the students was delivered at a wrestling club within the vicinity of the park. The students measured noise levels on site and checked access routes, parking zones, neighborhood context, natural and man-made features, facilities and issues, development potential, and climatic considerations. By the end of the visit, the students developed diagrams of site analysis in the park and finalized their project concepts.



GLIMPSE OF AN ONGOING PROJECT OF INTERIOR DESIGN DEPARTMENT

ZAHRA KAZMI



Title: Imagination In An Enclosure | Form & Space: The Unity Of Opposites

Under the supervision of Syeda Zahra Kazmi, the ongoing Interior Design Studio II project, titled "Imagination In An Enclosure | Form & Space: The Unity Of Opposites," the student of Interior Design, Mashood delves deep into the surrealism genre with his concept "Visions of the Impossible: Surrealism Reimagined." Drawing inspiration from the enigmatic works of surrealist master M.C. Escher, Mashood aims to create a captivating world where the boundaries between reality and dreams blur. His designs portray intricate patterns, mind-bending interior space perspectives, and impossible architectures, challenging conventional perceptions and exploring the depths of the subconscious. By incorporating elements such as surreal landscapes, distorted symbolism, and bizarre juxtapositions of ordinary objects, Mashood seeks to embark on a journey that transcends the limitations of the waking world, offering an otherworldly experience where imagination knows no bounds.

Through conceptual sketches, canvas compositions, and study models, Mashood brings to life the core elements of surrealism in his project. From representing the nature of perception and the unconscious mind to experimenting with distortion and symbolism, each aspect of his design reflects the surrealistic ethos. With a focus on bimorphic shapes, dream-like symbolism, and the portrayal of multiple levels of dreams, Mashood's project not only challenges traditional notions of interior design but also invites viewers to immerse themselves in a realm where the extraordinary becomes the norm, blurring the line between reality and imagination.

LECTURE ON BUILDING INTEGRATED SYSTEMS AT DEPARTMENT OF ARCHITECTURE, INSTITUTE FOR ART AND CULTURE.



A productive and informative lecture on Building Integrated Systems was arranged at the Department of Architecture, Institute for Art and Culture. Ar. Tahir Khan Khalidi, CEO and Principal Architect at Metacon Designs discussed the systems integration in construction that involves bringing together

subsystems to enhance efficiency, accuracy, and cost-effectiveness, that is crucial for project's implementation. Design for Sustainable Heating and Cooling focuses on combining heating and cooling systems with pipes embedded in concrete slabs or walls to optimize energy consumption. The design approach considers each component's characteristics to achieve a cohesive whole, emphasizing the importance of collaboration across different parties in the construction industry. Resource persons for the session included Asst. Prof. Ar. Rao Ahsan, Asst. Prof. Ar. Umer Malik and Lec. Ar. Uffaq Shahid.

SUSTAINABLE PROJECT MANAGEMENT AND EXECUTION WITH REFERENCE TO THE DESIGN THINKING APPROACH SESSION AT THE DEPARTMENT OF ARCHITECTURE, IAC



Ar. Mian Tanwir presented his architectural projects to the students of 10th Semester, Department of Architecture, IAC. In this session, he discussed the implementation of design thinking to sustainable project management that enhances innovation, stakeholder engagement, and problem-solving by integrating empathy and creativity. This approach prioritizes human-centered design, ensuring solutions to meet user needs while promoting environmental sustainability. Through iterative processes like empathizing, defining, ideating, and testing, design thinking fosters continuous improvement and data-driven decision-making. Stakeholder collaboration and a focus on positive impact drives sustainable outcomes, contributing to a more responsible and effective project execution. Embracing design thinking principles empowers organizations to create solutions that address complex challenges while advancing sustainability goals. The session was assisted by resource persons Asst. Prof. Ar. Najam-Ul-Haq, Asst. Prof. Ar. Hamna Ahmad, and Lec. Ar. Uffaq Shahid.

REVIVING THE TRADITIONAL ART THROUGH A CONTEMPORARY APPROACH

BY AR. MAHREEN JUNAID & MOMINA ASIF SHEIKH



Today, globalization has left a great impact on various aspects of our cultural environment such as the art and craft world. Globalization is normally contemplated as a process of integration of social and economic factors throughout the

world which led to the growth of trade and communication channels. The influence of globalization on the art world has been quite profound as over time it shaped the way that art is generated and traded. This resulted in the degradation of ancestral traditions and cultural homogenization. The advent of the internet has made it possible to exchange ideas, beliefs, and culture to a vast audience in no time. This often results in clashes between popular ideas and their significance eventually compelling a large population to have a common belief and culture. Which eventually reflects in contemporary art as being part of the process of eroding differences in various international cultures and economic values. Today several global artists are participating in international events and exhibitions online and attempting to exchange and sell their ideas. Thus with an ever-increasing number of creative approaches and themes an unprecedented level of artistic and cultural interconnectedness has sparked the emergence of new stylistic trends and movements in the art world. Through a plethora of creative approaches, themes, and investigative methods, the exploration of topics and cultural concerns with global significance is now universally accessible.

But this global exposure is hurting many local traditional crafts that have centuries-old history attached to them. Such as at least one language dies every 14 days in the world which shows how fast several cultures are diminishing today. In the case of Pakistan, the Kalash culture was dying due to globalization but deliberate intervention for conservation by the Pakistan government saved it from dying.



Patterns play a vital role in representing and preserving the identity of any culture in various ways. They serve as visual illustrations of a culture's identity by encapsulating traditional symbols from the region's history, diversity, craftsmanship, identity, and social interactions.

In Pakistan, the use of patterns in interior design holds a special historic place in its culture, representing the interwoven fabric of its traditions, culture, and artistic expressions which have been passed down through several generations. Historically Pakistan has been the crossroads of various civilizations starting from the Indus Valley Civilization while making its journey through the Mauryan Empire, the Mughal period and British empire till the post-independence period. This has left a remarkable influence on Pakistani aesthetics for interior design. However, in today's world, the global education system leads to the path of promoting skills that are essentially the result of Western cultural evolution, who are leaders of all the stages of

the industrial revolution in the world so far. Thus the modern education system often does not train students in the local crafts which leads to the death of traditional skills. Therefore, reviving the traditional motif patterns of Pakistan in contemporary interior design is substantial for conserving heritage, retaining identity, and cultural exchange. By combining traditional motifs and techniques into contemporary design, with the help of developing understanding of the modern lifestyle of today's Pakistani interior designers can revive use of traditional patterns in modern ways.

Pakistan's cultural heritage. The preservation effort towards traditional patterns assures that ancestral practices and art forms remain pertinent and prominent in a rapidly altering modern futuristic world. By harmonizing tradition with new techniques and ideas, interior designers can push the constraints of design manifestation and contribute to the expansion of Pakistani patterns. It will also promote cultural

multiplicity and will facilitate influential dialogue on both local and global scales. With this intention behind Interior design students of 6th semester were assigned an exercise to infuse Pakistani traditional patterns and motifs in a way that contains elements of contemporary life of a Pakistani which will help conserve traditional craft skills for our contemporary urban life. The students were asked to craft patterns on 3.75 or 4 sqft. canvas. The approach involved thorough research and exploration, with students engaging themselves in the rich tapestry of Pakistani heritage. By studying the daintiness of traditional patterns, students gained a deeper understanding of their cultural essence and aesthetic appeal. Then through juxtaposing of traditional motifs with futuristic components, students sought to create visually striking compositions that bridged the void between the past and the future. They experimented with various painting approaches and compositional interpretations to achieve dynamic and interesting results. Through this process, students aimed to reimagine Pakistani cultural lineage in a fresh and innovative light, offering a playful yet thought-provoking stance on tradition and modernity. The exercise nurtured creativity, experimentation, and a playful exploration of cultural identity within the context of modern art, students unearthed confidential meanings and cultural nuances, augmenting their artistic exertions with layers of abyss and complexity.



The outcome of this exercise ranged from absolutely modern arrangements to pieces heavily embedded in tradition. Studying the intricate details of these age-old motifs, their research sparked a knickknack that went beyond sheer appreciation. Traditional geometric forms were reimaged with fierce splashes of acrylics. Benign floral patterns were reinterpreted in the portrayals. It became a sanctuary of experimentation, with students fearlessly having fun with mediums, textures, and scale. This activity helped the students develop problem-solving skills, develop their own artistic voice, and improve their ability to produce something new by manipulating two different art forms.

In conclusion, the exercise of infusing Pakistani motifs into contemporary artwork on a canvas proved to be a transformative voyage for students. Through comprehensive analysis and exploration, they delved into the complex patterns and rich cultural heritage of Pakistan, seeking inspiration from traditional motifs and symbols. This painstaking approach not only aggravated their understanding of Pakistani culture but also fueled their ingenuity, letting them reimagine custom in a modern and futuristic light.

NEED OF AN HOUR

Our company is committed to build a diverse and inclusive workplace that reflects the richness of perspectives, experiences, and talents within our workplace. To achieve this goal, the need for a diverse workforce in managing upcoming mega projects is essential for driving innovation, enhancing problem-solving capabilities, fostering adaptability, strengthening stakeholder engagement, attracting top talent, gaining market insights, and upholding ethical and social responsibility. By prioritizing diversity and inclusion, it is a requirement in our office to assure the success in the increasingly complex and interconnected world of mega project management.

Having a diverse workforce is essential for successfully managing upcoming mega projects for several reasons:

1. Innovation and creativity
2. Problem-Solving and decision-making
3. Adaptability and resilience
4. Cultural competence and stakeholder engagement
5. Talent acquisition and retention
6. Market insights and global perspective
7. Ethical and social responsibility

TRAINING PROGRAM FOR THE RECRUITMENT

Incorporating diversity into the recruitment process requires a strategic training plan. An extensive training plan for new recruits in our architectural office for a mega project would involve several key components.

Firstly, comprehensive onboarding sessions will introduce recruits to the company's culture, values, and project objectives.

Secondly, specialized workshops will cover essential skills such as project management, design innovation, and sustainable architecture practices. Thirdly, training modules on stakeholder engagement, regulatory compliance, and legal considerations will ensure recruits are well-prepared for the complexities of mega projects.

Fourthly, hands-on sessions with industry-leading software tools like Building Information Modeling (BIM) will enhance technical proficiency.

Fifthly, team-building activities and collaboration exercises will foster effective communication and teamwork among recruits.

Sixthly, guest lectures and site visits to ongoing mega projects will provide real-world insights and inspiration.

Seventhly, diversity and inclusion training will promote awareness and sensitivity to diverse perspectives and cultures.

Eighthly, mentorship programs pairing recruits with experienced architects will facilitate knowledge transfer and professional development.

Ninthly, continuous learning opportunities through local and international stakeholder's seminars, webinars, and conferences will keep recruits updated on the latest trends and technologies in architecture.

Finally, regular performance evaluations and feedback sessions will ensure ongoing growth and improvement throughout the duration of the mega project.



TRAINING ARCHITECTS PROGRAM



Following the success story of its 1st Batch of TRAINEE ARCHITECTS PROGRAM, completed in December'23 – January'24, the INSTITUTE FOR ART & CULTURE (IAC), Federally Chartered Degree Awarding Institute of Pakistan (Recognized by HEC), is proud to launch the 2nd BATCH of its flagship TRAINEE ARCHITECTS PROGRAM (TAP).

The JOB PLACEMENT CENTRE AT IAC is fully committed to provide best quality talent, in demand, to the local & international industry (especially in Healthcare, Hospitality & Real Estate sectors) through its profound strategic partnership with GLOBAL HUMAN CAPITAL (GHC), the reputable HR services provider. The qualified trainee prospects get trained by leading Subject Matter Experts (SMEs) at INTERNATIONAL ARCHITECTURAL CONSULTANCY PVT. LTD. (IACPL) formed under the ambit of ORIC DEPARTMENT OF IAC. The GHC plays a pivotal role in job placements of the qualified trainees meeting specific job requirements in local & international marketplaces, hereby completing a profound ecosystem of this unique collaboration model.

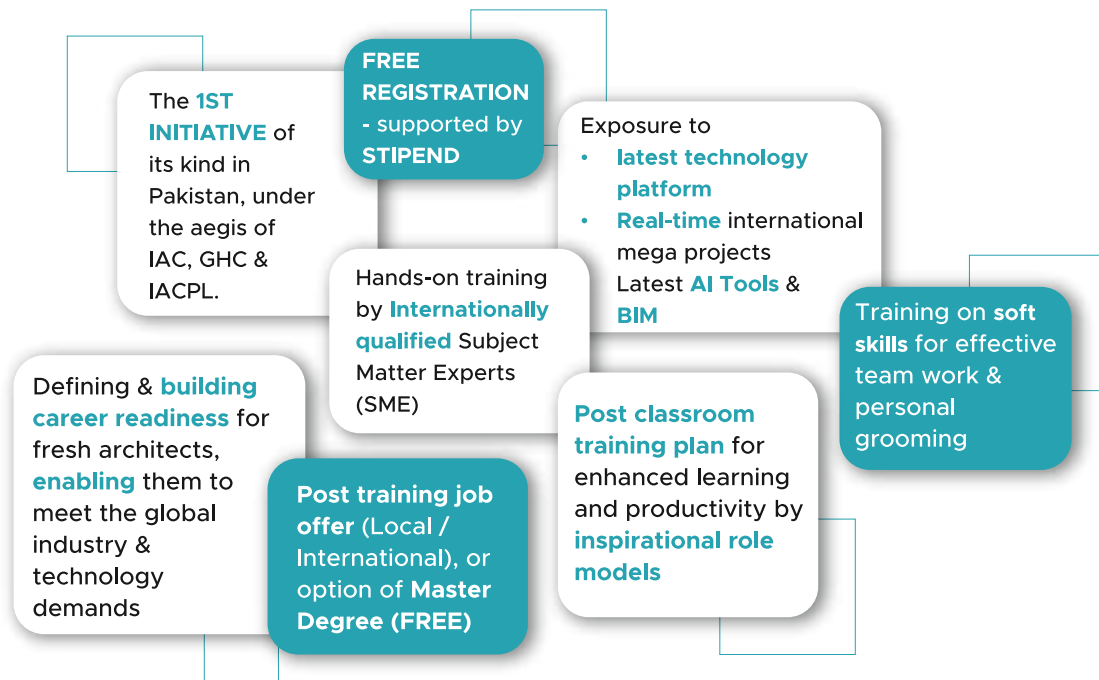
The 6-Week Skills Enhancement Program aims to equip fresh architects as well as young graduates (architects) with essential Design Sensibility, Sustainability, Managerial Skills, Technological Proficiency, Project Management and Holistic Development.

Through this training initiative, IAC focuses predominantly on employability and excellence drive through this training initiative to become professionals by continuously enhancing their skills and stay abreast of industry advancements.

We believe that investing in the continuous development of talent is essential for driving innovation and maintaining industry leadership by consolidating academia industry integration-our profound strength!



WHY SHOULD I REGISTER FOR TRAINEE ARCHITECTS PROGRAM (2ND BATCH)?



KEY TOPICS FOR TRAINING ARCHITECTS PROGRAM

Architecture

Hospitality Design
Hospital Design
Interior Design
High Rise / Mega Projects
Landscape Design
Master Plan and Infrastructure
Design Processes & Management
3D Visualization

Soft Skills

People Management
Attention & Mindfulness
Conflict Resolution
Art of Giving & Receiving
Feedback
JoHerry Windows

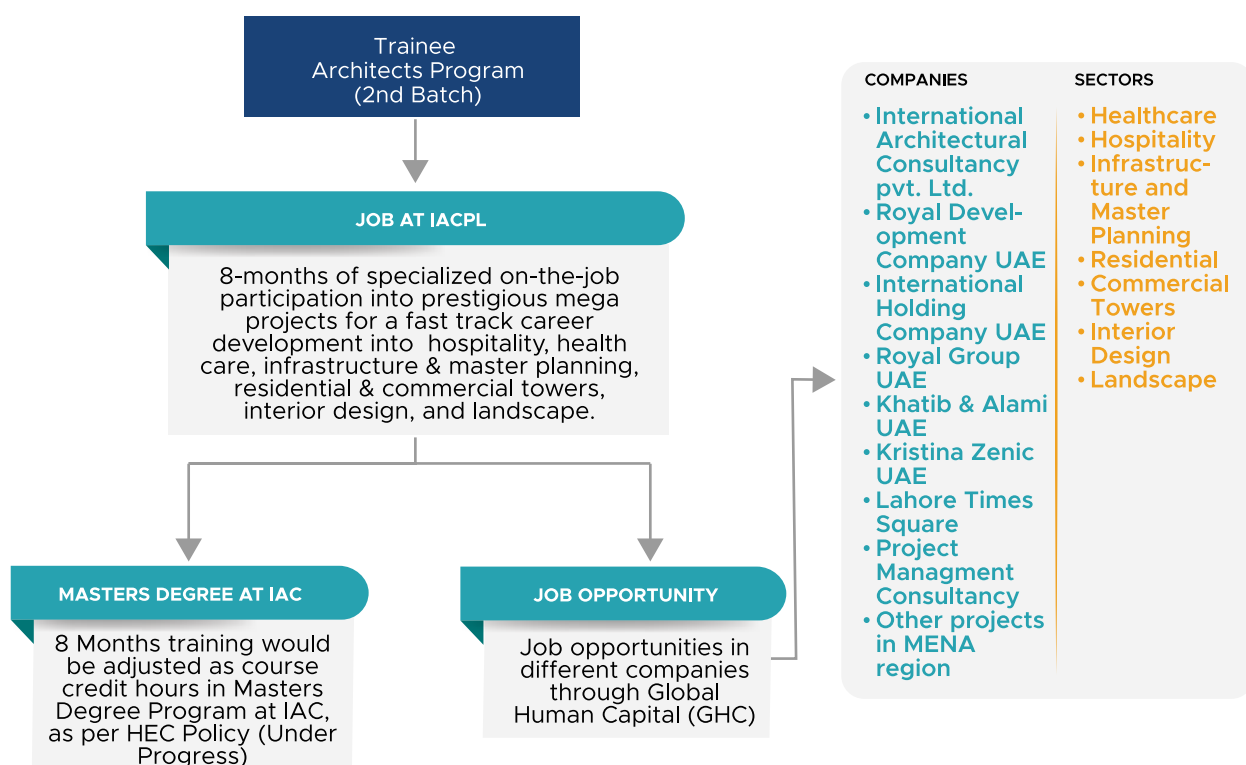
Engineering

Accessibility Design & Vertical Transportation
Construction & Cost Management
Structure Design
MEP & HVAC

Project Management

Project & Contract Management
Planning / Scheduling Principles
Business Process Management
Sustainable Buildings
Project Risk Management
Building Information Modelling
Site Logistics & Safety

OPPORTUNITIES FOR 2ND BATCH GRADUATES



ON JOB TRAINING AFTER RECRUITMENT

Deciding on career plans for the next months is paramount for our office settings, especially when we are preparing a diverse workforce for mega projects. Such planning ensures that individuals from various backgrounds have clear pathways for growth and advancement within the organization. By offering equitable opportunities for professional development, regardless of ethnicity, gender, or background, our vision is to foster an inclusive environment where all employees feel valued and supported.

This inclusivity is particularly crucial for mega projects, where diverse perspectives and skills are essential for success.

Additionally, career planning aids in talent retention by demonstrating the organization's commitment to investing in its employees' futures, thereby increasing engagement and job satisfaction.

Moreover, it facilitates strategic alignment between individual aspirations and organizational objectives, ensuring that teams are well-prepared to tackle the complex challenges posed by mega projects.

Ultimately, by empowering a diverse workforce to proactively shape their career trajectories, offices cultivate a culture of innovation, collaboration, and excellence that is indispensable for the successful execution of large-scale initiatives



CURRICULUM IMPROVEMENT

In response to the evolving landscape of the architectural profession and the increasing demands of the industry, we have undertaken a comprehensive review of our curriculum. Our goal is to ensure that your child receives the most relevant, comprehensive, and future-focused education possible, equipping them with the knowledge, skills, and mindset needed to thrive in the field of architecture.

In order to make sure that student's skills are at par with international standards and to enhance their chances of employability, after the extensive discussions with subject matter experts, we have upgraded the curriculum of Architecture in consultation with international universities and renowned practices.

In response to the evolving landscape of the architectural profession and the increasing demands of the industry, we have undertaken a comprehensive review of our curriculum. Our goal is to ensure that your child receives the most relevant, comprehensive, and future-focused education possible, equipping them with the knowledge, skills, and mindset needed to thrive in the field of architecture.

In order to make sure that student's skills are at par with international standards and to enhance their chances of employability, after the extensive discussions with subject matter experts, we have upgraded the curriculum of Architecture in consultation with international universities and renowned practices.

Here are some highlights of the upgrades we are introducing:

- Integration of cutting-edge technologies
- Emphasis on sustainability and environmental consciousness
- Enhanced interdisciplinary collaboration
- Practical experienced and real-world projects
- Cultural understanding and global perspectives

The upgraded curriculum now contains the latest techniques and methodologies of design, state of the art software / Artificial Intelligence Tools and put special emphasis on earlier neglected areas like specialty building design, building services, constructability and value engineering, building information modelling (BIM), Design management, sustainability, energy efficient buildings design, project management, health and safety management (HSE).

8 MONTHS ON JOB POTENTIAL TRAINEES CAREER PATH DEVELOPMENT PROGRAM

Outline of the career path development for the potential trainees is as follow:

Month
1-2

ORIENTATION AND FOUNDATION BUILDING

Week 1-2: Introduction to the firm, team members career journeys, understanding of career paths development and company culture.

Selection of design specialization knowledge with advanced courses tailored to each trainee's chosen field, involving case studies, guest lectures, and site visits in following fields:

1. Residential Building & Towers
2. Commercial Building & Towers
3. Hospitality & Hotel Towers
4. Health Care & Hospital Towers
5. Master Planning & Infrastructure Design
6. Interior Design
7. Landscape & External Design

Week 3-4: Understanding of on ongoing REEM heights live projects to understand project, workflows and client interactions.

Week 5-6: Basic design exercises and workshops to develop creativity and problem-solving skills.

Parallel Activity: Overview of architectural principles, design standards & fundamentals, and software tools commonly used in the industry (AutoCAD, Revit, SketchUp, etc.) as well as deployment of each trainee with specialty manager.



Month
2-3

DESIGN EXPLORATION

Week 1-2: Participating in small-scale design projects of company under the guidance of mentors/managers.

Week 3-4: Hands on experience of technical aspects of architecture such as: technical drawing, detail drawings, systems, building codes, sustainability principles, etc.

Week 5-6: Attend design critique sessions and learn to give and receive constructive feedback.

Parallel Activity: Overview international building codes, DHA bylaws and other applicable codes and assigning each trainee to a specialty manager for deployment.



Month
4-5

TECHNICAL SKILLS DEVELOPMENT

Week 1-2: Overview of technical aspects of master planning, sustainability, TIA & EIA.

Week 3-4: Hands-on training in advanced software applications Revit, 3D modeling, Navisworks and BIM (Building Information Modeling).

Week 5-6: Workshops on construction documentation and detailing.

Parallel Activity: Specialized training sessions in high-rise architecture, covering structural considerations, facade design, and MEP (Mechanical, Electrical, and Plumbing) systems and deployment of each trainee with specialty manager.

Month
5-6

PROJECT MANAGEMENT BASICS

Week 1-2: Introduction to project management methodologies and tools (Gantt charts, project schedules, etc.).

Week 3-4: Collaborate with project managers to understand project planning and budgeting.

Week 5-6: Simulated project management exercises to develop organizational and leadership skills.

Parallel Activity: Allocation of specific role in REEM heights project.

Month
7

SUSTAINABILITY & GREEN BUILDING PRINCIPLES

Week 1-4: Provide comprehensive training on sustainability in architecture, including sustainable design principles, energy efficiency, and water conservation.

Educate on LEED certification processes and how to integrate sustainable practices into design and construction.

Parallel Activity: Choose workshops based on individual interests or areas of specialization (urban design, sustainable architecture, interior design, etc.). Guest lectures or seminars by industry experts on emerging trends and career pathways within architecture.

Assignment of specific roles within the REEM Heights project and leading the implementation of sustainability and Green Building Principles in their designated plot.

Month
8

ADVANCED SPECIALIZATION AND INDEPENDENT PROJECTS

Integration into Phase 2 Projects:

- Integrate trainees into the phase 2 design teams, giving them specific responsibilities under the guidance of experienced professionals.
- Initiate capstone projects where trainees, in small groups or individually, design a component of a high-rise building, applying all the skills and knowledge acquired.

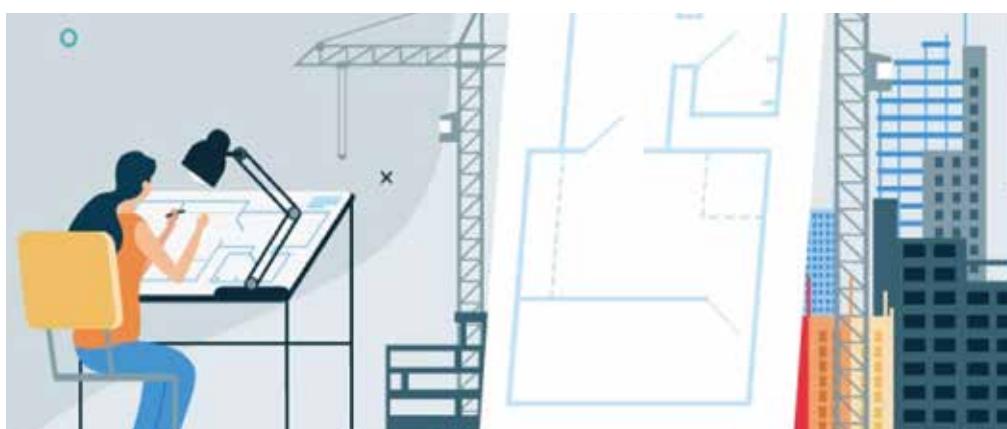
Week 1-4:

- Preparation of client's brief
- Preparation of Design Proposals
- Prepare List of Deliverables
- Preparation of Presentation
- Understanding of BUA, GFA
- Understand FIDIC (The form of standard contract) with emphasis on clauses related to planning.
- Develop Specifications
- Develop Planning Schedule using Excel / PV
- Prepare Minutes of Meeting
- Design Report & Dash Board
- Demonstrate project progress and comprehensive presentation through top management.



SET OF SKILLS

Incorporating a comprehensive set of skills into the curriculum for architects is crucial to adequately prepare students for the demands of the profession. These skills encompass a wide range of competencies, including design proficiency, technical expertise, and project management abilities. By developing strong design skills, students learn to conceptualize and articulate innovative architectural solutions that address complex spatial, aesthetic, and functional requirements. Technical proficiency, including proficiency in architectural drafting software and Building Information Modeling (BIM) tools, enables students to translate their design concepts into detailed drawings and models that can be effectively communicated to clients, engineers, and contractors.



Additionally, skills in project management, communication, and collaboration are essential for architects to lead interdisciplinary teams, coordinate project tasks, and ensure the successful execution of architectural projects from conception to completion. Moreover, integrating skills related to sustainability, cultural competence, and ethical practice into the curriculum ensures that students are equipped to design buildings and spaces that are environmentally responsible, culturally sensitive, and socially inclusive. Overall, a curriculum that encompasses a diverse set of skills provides students with the knowledge, expertise, and competencies needed to thrive in the dynamic and multifaceted field of architecture.



RECOMMENDED SET OF SOFT SKILLS FOR ARCHITECTURAL EDUCATION

- | | | | | | | | | |
|----|---|--------------------------------------|----|---|--|----|---|--|
| 01 | ➤ | Ethics on Workplace | 02 | ➤ | Business Communication | 03 | ➤ | Attention |
| 04 | ➤ | Team Building | 05 | ➤ | Performance Excellence (Art of Prioritizing) | 06 | ➤ | Conflict resolution |
| 07 | ➤ | Art of giving and receiving feedback | 08 | ➤ | Attention and mindfulness | 09 | ➤ | People Management in Project Management Industry |

RECOMMENDED SET OF TECHNICAL SKILLS FOR ARCHITECTURAL EDUCATION

- | | | | | | | | | |
|----|---|---|----|---|--|----|---|--|
| 01 | ➤ | Occupant Experience Design | 02 | ➤ | BPM (Business Process Management) | 03 | ➤ | Project Management + Project Risk Management |
| 04 | ➤ | Planning / scheduling principles | 05 | ➤ | Area Calculation Methods | 06 | ➤ | Role of IT in Mega Projects |
| 07 | ➤ | Cost Engineering + Project Budgeting and Cost Control | 08 | ➤ | HEALTH SAFETY & ENVIRONMENT(HSE) | 09 | ➤ | Applicable Authorities, By Laws and approvals (Overall view) |
| 10 | ➤ | Building LCA/ Sustainability in architecture/LEED | 11 | ➤ | Mega Development Traffic Studies + basement and parking | 12 | ➤ | Contract Management (Change Management + Claim + Dispute) |
| 13 | ➤ | Construction Management Project (CP Construction) | 14 | ➤ | Site Logistics and Security | 15 | ➤ | QA QC, Compliance & Audit |
| 16 | ➤ | Construction strategy and Phases | 17 | ➤ | PMI / EDMS (Project Management Information System / Electronic Document Management System) | 18 | ➤ | Procurement & Supply Chain Management |
| 19 | ➤ | Basics of MEP + HVAC + DCP | 20 | ➤ | RACI Matrix | | | |

Contact

+92 333 183 5770

Info@iarchon.com | tap@iarchcon.com

EDITORIAL BOARD

EDITOR-IN-CHIEF:

Prof. Dr. Yusuf Awan
Dean School of Architecture,
Design and Urbanism

COMPOSERS:

Ar. Hashim Saeed
Lecturer

EDITORS:

Engr. Muhammad Arshad
Assistant Professor
Ar. Dr. Danyal Ahmed
Assistant Professor
Ms. Aisha Abdullah
Assistant Professor

CONTACT

(042) 32590040
www.iac.edu.pk
7.5 Km from Thokar Niaz Baig,
Main Raiwind Road, Lahore.



@iacofficials

